



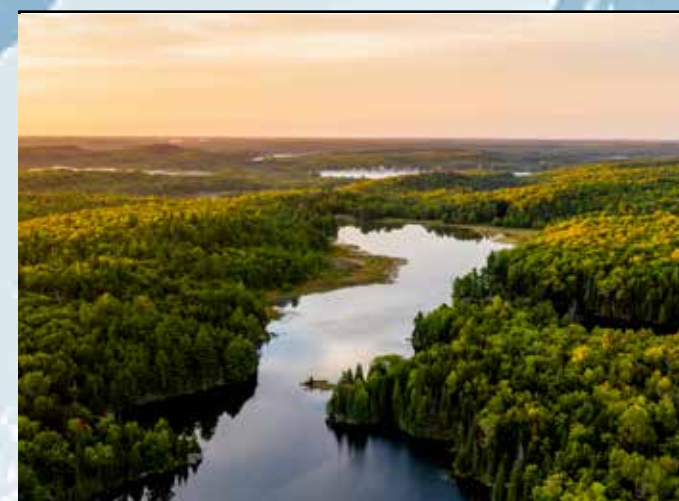
# GEOGRAPHY COURSES FALL 2020



**GEO 109**

DIGITAL MAPPING

TR, 9:30-10:20 (Giesecking)  
TR, 11:00-12:15 (Wilson)



**GEO 130**

EARTH'S PHYSICAL ENVIRONMENT

ONLINE 8/24-10/16 (Turkington)  
TR, 9:30-10:45 (Liang)



**GEO 135**

GLOBAL CLIMATE CHANGE

MWF, 10:00-10:50  
(Turkington)



**GEO 161**

GLOBAL INEQUALITIES

MW, 9:00-9:50 (Phillips, L.)  
TR, 2:00-3:15 (John)



**GEO 162**

INTRODUCTION TO GLOBAL ENVIRONMENTAL ISSUES

MW, 11-11:50 (Mutersbaugh)



**GEO 172**

HUMAN GEOGRAPHY

TR, 11:00-12:15 (Smyth)  
ONLINE 10/19-12/18 (Kinslow)



**GEO 210**

HOW THE INTERNET WORKS

TR, 12:30-1:20 (Zook)



**GEO 220**

U.S. CITIES

MWF, 10:00-10:50 (Wood)  
TR, 11:00-11:50 (McCutcheon)



**GEO 221**

IMMIGRANT AMERICA: A GEOGRAPHIC PERSPECTIVE

MWF, 10:00-10:50 (Johnson)



**GEO 222**

CITIES OF THE WORLD

MW, 1:00-1:50 (Phillips, L.)  
TR, 11:00-12:15 (Samers)



**GEO 230**

WEATHER AND CLIMATE

MWF, 2:00-2:50  
(Turkington)



**GEO 235**

ENVIRONMENTAL MANAGEMENT AND POLICY

MWF, 11:00-11:50  
(Phillips, L.)



**GEO 255**

GEOGRAPHY AND THE GLOBAL ECONOMY

MWF, 12:00-12:50  
(Wood)



**GEO 261**

GLOBAL DYNAMICS OF HEALTH AND DISEASE

MW, 9:00-9:50 (Stallins)  
ONLINE 10/19-12/18 (Hardesty)



**GEO 305**

ELEMENTS OF CARTOGRAPHY

TR, 9:30-10:45  
(Lally)



**GEO 309**

INTRODUCTION TO GIS

MWF, 2:00-2:50 (Levy)  
TR, 12:30-1:45 (Lally)



**GEO 316**

ENVIRONMENT AND DEVELOPMENT

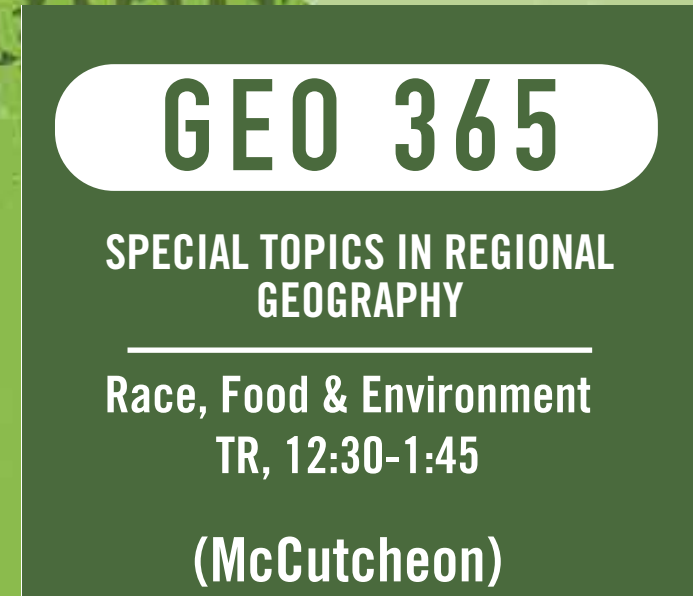
MWF, 11:00-11:50  
(Senanayake)



**GEO 351**

PHYSICAL LANDSCAPES

MWF, 11:00-11:50  
(Phillips, J.)



**GEO 365**

SPECIAL TOPICS IN REGIONAL GEOGRAPHY

Race, Food & Environment  
TR, 12:30-1:45  
(McCutcheon)



**GEO 406**

FIELD STUDIES IN GEOGRAPHY

M, 2:00-4:30  
(Mutersbaugh)



**GEO 419**

INTRODUCTION TO REMOTE SENSING

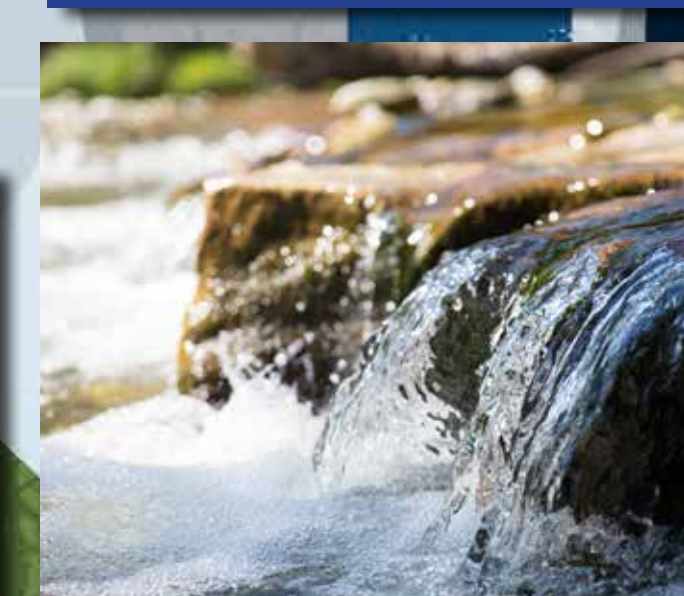
TR, 2:00-3:15  
(Liang)



**GEO 431**

POLITICAL ECOLOGY

MWF, 12:00-12:50  
(Beymer-Farris)



**GEO 451G**

FLUVIAL FORMS AND PROCESSES

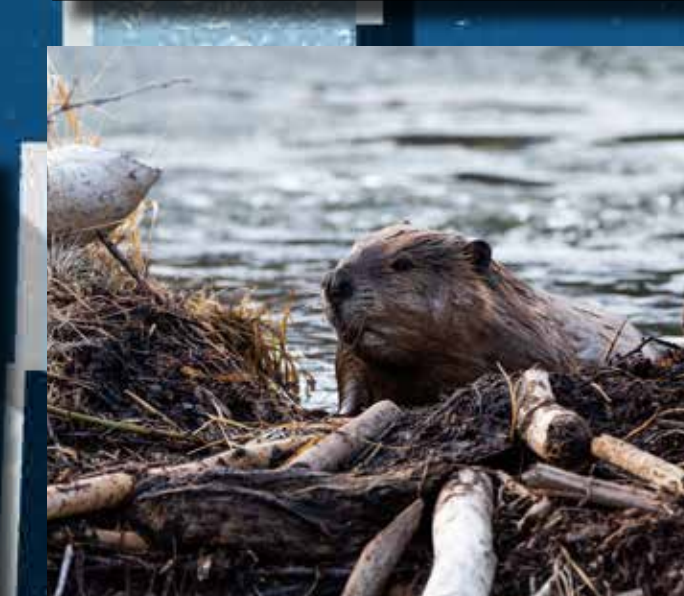
MWF, 9:00-9:50  
(Phillips, J.)



**GEO 530**

BIOGEOGRAPHY AND CONSERVATION

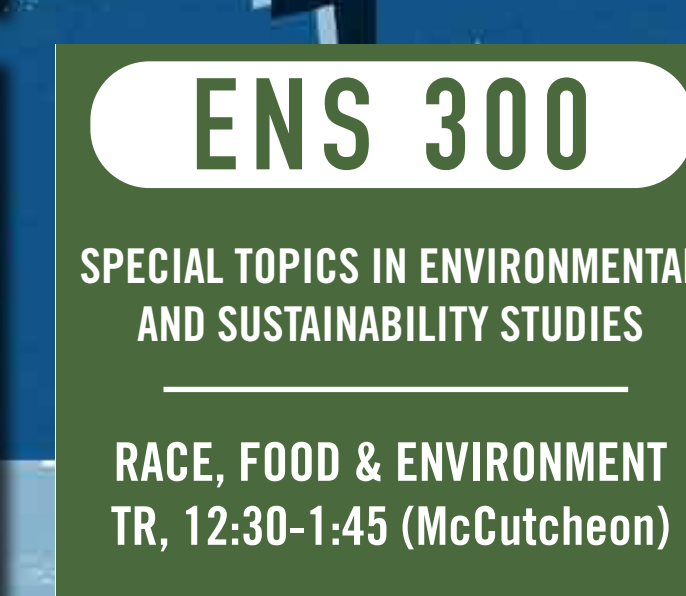
MWF, 1:00-1:50  
(Stallins)



**ENS 201**

ENVIRONMENTAL AND SUSTAINABILITY STUDIES II: NATURAL SCIENCES AND POLICY

TR, 2:00-3:15  
(Schatzki)



**ENS 300**

SPECIAL TOPICS IN ENVIRONMENTAL AND SUSTAINABILITY STUDIES

RACE, FOOD & ENVIRONMENT  
TR, 12:30-1:45 (McCutcheon)

**ENS 300**

SPECIAL TOPICS IN ENVIRONMENTAL AND SUSTAINABILITY STUDIES

Water Justice Conflicts in U.S. History  
TR 12:30-1:45 (Newfont)



**ENS 400**

SENIOR SEMINAR: SUSTAINABILITY IN ACTION

W, 1:00-3:30  
(Beymer-Farris)

THE GEOGRAPHY PROGRAM INCLUDES A BACHELORS OF ARTS OR SCIENCES WITH CONCENTRATIONS IN: Mapping & GIS, Environment, and Cities & Societies

MINORS OPTIONS INCLUDE: Geography, Mapping & GIS, and Urban Studies (NEW)

INTERNSHIPS IN: Planning, GIS & Remote Sensing, Nonprofits and Community Organizations, Environmental Management, Safety & Security, Data Analysis, and Cartography & Visual Design

LOOKING FOR MORE INFORMATION? Be sure to schedule an appointment with a geography advisor simply using your student appointment scheduler in MyUK

A&S ADVISING CENTER INFORMATION: The A&S Advising Center office is located in 202 Patterson Office Tower and our office hours are Monday-Friday from 8:30am-4:30pm.

PLEASE CONTACT US IF YOU HAVE ANY QUESTIONS OR CONCERNS! Phone: 859.257.8712 | Fax: 859-323-1073 Email: ASAdvisingCenter@uky.edu

UK College of Arts and Sciences